



Certificate of Analysis

CANNABUSINESS LABORATORIES, LLC

Customer:

Palmetto Synergistic Research
8856 Pee Dee Hwy
Conway, SC 29527 / 843-331-1246

Sample ID **231214005**
Order Number **CB231214003**
Sample Name **Watermelon gummy**

External Sample ID

Batch Number **23346**

Product Type **Edible**

Sample Type **Edible**

Received Date **12/14/2023**

COA Released **12/18/2023**

Comments

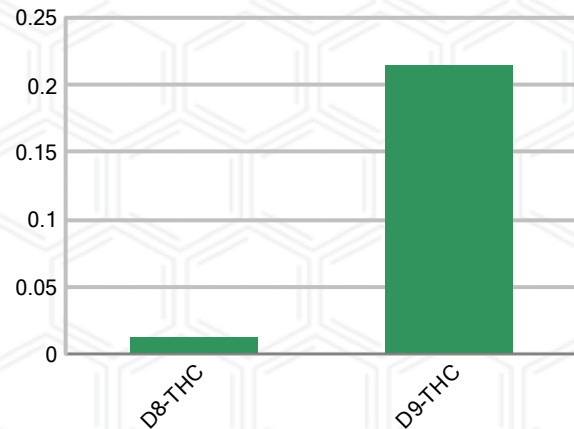
CANNABINOID PROFILE (Product Size = 10.51 g)

Analyte	LOQ (%)	% Weight	mg/g	mg/unit
CBC	0.01	ND	ND	ND
CBD	0.01	ND	ND	ND
CBDa	0.01	ND	ND	ND
CBDV	0.01	ND	ND	ND
CBG	0.01	ND	ND	ND
CBGa	0.01	ND	ND	ND
CBN	0.01	ND	ND	ND
d8-THC	0.01	0.012	0.123	1.29
d9-THC	0.01	0.215	2.154	22.64
THCa	0.01	ND	ND	ND
Total Cannabinoids		0.228	2.277	23.93
Total Potential THC		0.215	2.154	22.64
Total Potential CBD		N/A	N/A	ND
Total Potential CBG		N/A	N/A	ND
Ratio of Total Potential CBD to Total Potential THC				N/A
Ratio of Total Potential CBG to Total Potential THC				N/A

SAMPLE IMAGE



CANNABINOIDS % Weight



*Total Cannabinoids refers to the sum of all cannabinoids detected.

*Total Potential CBD = (0.877 x CBDa) + CBD. *Total Potential THC = (0.877 x THCa) + THC. *Total Potential CBG = (0.877 x CBGa) + CBG.

*Total Potential THC/CBD are calculated to take into account the loss of an acid group during decarboxylation.



J. Hobgood
Laboratory Manager

SIGNATURE

Jamie Hobgood

LABORATORY MANAGER

12/18/2023 11:31 AM

DATE

This product has been tested by CannaBusiness Laboratories using validated testing methodologies and a quality system. Values reported relate only to the product tested. CannaBusiness Laboratories makes no claims as to the efficacy, safety, or other risks associated with any detected or non-detected levels of any compounds reported herein. This Certificate shall not be reproduced except in full, without the written permission of CannaBusiness Laboratories. Photo is of sample received by the lab and may vary from final packaging. The results apply to the sample as received.





Certificate of Analysis

CANNABUSINESS LABORATORIES, LLC

Customer

Palmetto Synergistic Research
8856 Pee Dee Hwy
Conway, SC 29527 / 843-331-1246



Sample Name: Watermelon gummy

Sample ID: 231214005

Order Number: CB231214003

Product Type: Edible

Sample Type: Edible

Received Date: 12/14/2023

Batch Number: 23346

COA released: 12/18/2023 11:31 AM

Potency (mg/g)			
Date Tested: 12/18/2023		Method: CB-SOP-028	
Instrument:			
0.215 %	0.000 %	0.228 %	2.277 mg/g
Total THC	Total CBD	Total Cannabinoids	Total Cannabinoids

Analyte	Result	Units	LOQ	Result	Units
CBC (Cannabichromene)	ND	%	0.010	ND	mg/g
CBD (Cannabidiol)	ND	%	0.010	ND	mg/g
CBDa (Cannabidiolic Acid)	ND	%	0.010	ND	mg/g
CBDV (Cannabidivarin)	ND	%	0.010	ND	mg/g
CBG (Cannabigerol)	ND	%	0.010	ND	mg/g
CBGa (Cannabigerolic Acid)	ND	%	0.010	ND	mg/g
CBN (Cannabinol)	ND	%	0.010	ND	mg/g
D8-THC (D8-Tetrahydrocannabinol)	0.012	%	0.010	0.123	mg/g
D9-THC (D9-Tetrahydrocannabinol)	0.215	%	0.010	2.154	mg/g
THCa (Tetrahydrocannabinolic Acid)	ND	%	0.010	ND	mg/g



J. Hobgood
Laboratory Manager

Jamie Hobgood

12/18/2023 11:31 AM

SIGNATURE

DATE

NT = Not tested, ND = Not detected; LOQ = Limit of Quantitation; <LOQ = Detected; >ULOL = Above upper limit of linearity; CFU/g = Colony forming units per 1 gram; TNTC = Too numerous to count

This product has been tested by CannaBusiness Laboratories using validated testing methodologies and a quality system. Values reported relate only to the product tested. CannaBusiness Laboratories makes no claims as to the efficacy, safety, or other risks associated with any detected or non-detected levels of any compounds reported herein. This Certificate shall not be reproduced except in full, without the written permission of CannaBusiness Laboratories. Photo is of sample received by the lab and may vary from final packaging. The results apply to the sample as received.